

## Modular Cooking Range Line EVO700 Open Base Cupboard 1 Module

ITEM # \_\_\_\_\_

MODEL # \_\_\_\_\_

NAME # \_\_\_\_\_

SIS # \_\_\_\_\_

AIA # \_\_\_\_\_



371113 (E7BANH00O0)

Open base, 1 module

### Main Features

- Unit can be easily installed below other 700 line top models.
- Unit delivered with 50 mm height adjustable feet in Stainless steel.
- Open base compartment for storage of pots, pans, sheet pans, etc.
- Doors with handles, drawers, heating kits and runners for GN containers can be ordered separately.

### Construction

- Constructed in Stainless steel with Scotch Brite finish to meet the highest hygiene standards.

APPROVAL: \_\_\_\_\_

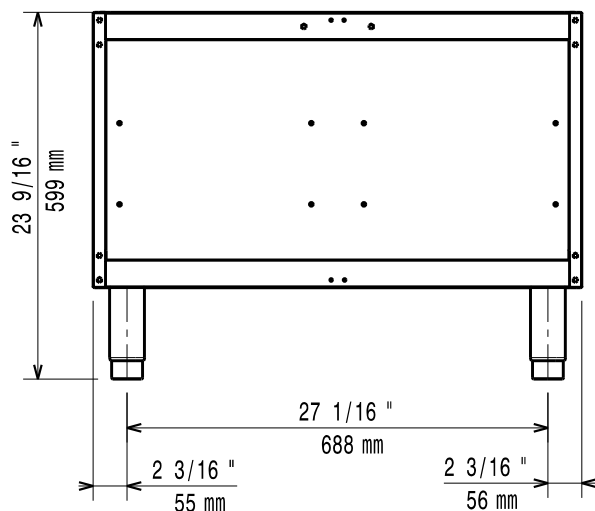
## Optional Accessories

- 4 wheels, 2 swivelling with brake (EVO700/900). It is mandatory to install with base supports for feet/wheels. PNC 206135 ☐
- Flanged feet kit PNC 206136 ☐
- Frontal kicking strip for concrete installation, 800 mm PNC 206148 ☐
- Frontal kicking strip for concrete installation, 1000 mm PNC 206150 ☐
- Frontal kicking strip for concrete installation, 1200 mm PNC 206151 ☐
- Frontal kicking strip for concrete installation, 1600 mm PNC 206152 ☐
- Frontal kicking strip, 800 mm PNC 206176 ☐
- Frontal kicking strip, 1000 mm PNC 206177 ☐
- Frontal kicking strip, 1200 mm PNC 206178 ☐
- Frontal kicking strip, 1600 mm PNC 206179 ☐
- 4 feet for concrete installation (not for 900 line freestanding grill) PNC 206210 ☐
- Central support for installation of drawers and grid supports for open base cupboards PNC 206245 ☐
- 2 panels for service duct (single installation) PNC 206248 ☐
- Pair of side kicking strips PNC 206249 ☐
- 2 supports runners for open base for 4 GN1/1 PNC 206257 ☐
- Electric heating kit for cupboards PNC 206259 ☐
- Pair of side kicking strips (concrete installation) PNC 206265 ☐
- Water column with swivel arm (water column extension not included) PNC 206289 ☐
- 2 side covering panels, height 700 mm, depth 700 mm PNC 206319 ☐
- 2 drawers for open base, height 100 mm PNC 206328 ☐
- Door for open base cupboard PNC 206342 ☐
- 2 drawers for open base, height 100 mm PNC 206360 ☐
- Base support for feet or wheels - 800mm (EVO700/900) PNC 206367 ☐
- Base support for feet or wheels - 1200mm (EVO700/EVO900) PNC 206368 ☐
- Base support for feet or wheels - 1600mm (EVO700/900) PNC 206369 ☐
- Base support for feet or wheels - 2000mm (EVO700/900) PNC 206370 ☐
- Rear paneling - 800mm (EVO700/900) PNC 206374 ☐
- Rear paneling - 1000mm (EVO700/900) PNC 206375 ☐
- Rear paneling - 1200mm (EVO700/900) PNC 206376 ☐

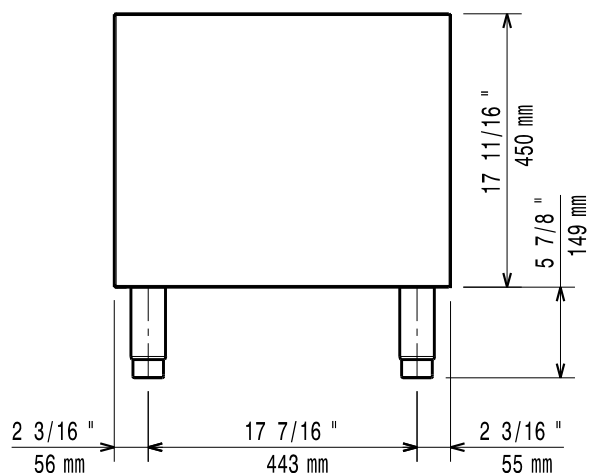
## Key Information:

External dimensions, Width:	
371113 (E7BANH0000)	800 mm
External dimensions, Depth:	550 mm
External dimensions, Height:	600 mm
Net weight:	15 kg

**Front**



**Side**



**Top**

